



Pythium Turf Diseases

2019 - Bayer Solutions

// THE PROBLEM

Pythium turf diseases cause real problems for golf course superintendents. Four major diseases are caused by various Pythium species: high and low temperature blights, root rot and root dysfunction. Signature™ Stressgard® and Banol® are effective fungicides for all Pythium diseases. Resistance has not been an issue for either fungicide after more than 20 years of commercial use, making them reliable choices for Pythium control.

// WHAT TO LOOK FOR

Pythium Blight. Symptoms appear as sunken, greasy black patches and streaks on turf that can take on an orange to dark grey colour. Affected turf is often matted and has a water-soaked appearance. White, cottony mycelium is typically present in the early morning. Blight can kill turf in 24-48 hours and preventive measures are key for controlling this disease. Different species cause blights at low or high temperatures, but high humidity or leaf wetness are commonly needed for disease to develop.

Pythium Root Rot. Affected turf can show irregular chlorotic, yellow or orangish patches or streaks, or thinned areas of turf. No foliar mycelium is produced, but roots may appear water-soaked and rotted or show a significant reduction in mass or root hair production. Microscopic diagnosis may be needed to detect Pythium infestations in roots. Root rot can occur in cool or hot conditions, and is especially active when soil is wet and plants are stressed.

Pythium Root Dysfunction. This disease is caused by *Pythium volutum* and is seen primarily on creeping bentgrass that is under stress. Infections take place in the spring and fall, reducing root growth, but symptoms can appear later when plants are under stress. Affected areas are patches up to 0.5-0.75 m in size that show wilt or decline and can turn orange or brown. Root mass and root hairs are greatly reduced, and plants tend to collapse under high temperature conditions. Microscopic diagnosis is required to confirm the presence of *P. volutum* in roots.

// BAYER SOLUTIONS

All of these Pythium diseases require different management approaches as shown in the chart on page 2. Prevention is a common key for all of these diseases as they tend to occur when the turf has poor chances for recovery.

Signature Stressgard provides excellent preventive activity against Pythium diseases. Since it is fully systemic, there is no need to water in applications. Signature Stressgard has unique Stressgard® Formulation Technology and should be used as part of a seasonal disease control and plant health program.

Banol has reliable preventive and curative activity. For Pythium blight, applications need to be targeted on to the foliage and crowns; for Pythium root rot, the application needs to be watered into the upper root zone to be most effective.

For Pythium root dysfunction, Signature Stressgard and Banol should be combined in a spring and fall rotation program.



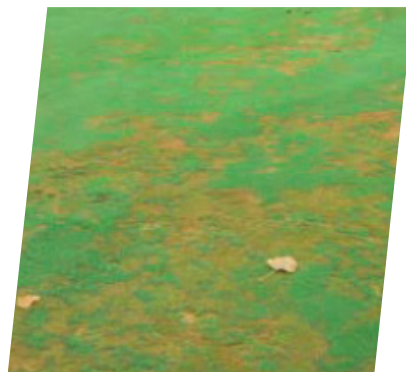
Pythium Turf Diseases

2019 - Bayer Solutions

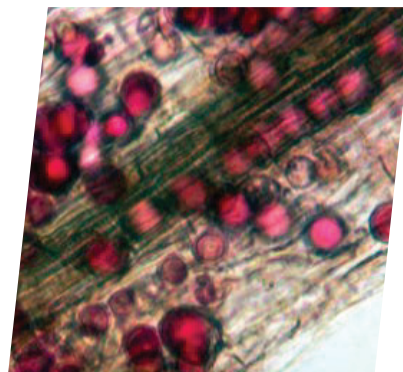
Solution	Pythium Blight (High Temperature)	Pythium Blight (Low Temperature)	Pythium Root Rot	Pythium Root Dysfunction
Primary Species Involved	<i>P. aphanidermatum</i> <i>P. myriotylum</i>	<i>P. graminicola</i> <i>P. ultimum</i>	<i>P. graminicola</i> <i>P. ultimum</i> <i>P. torulosum</i> <i>P. vanterpoolii</i> + many others	<i>P. volutum</i>
Typical Conditions for Disease Development	Daytime temperatures of 29-37 °C; night-time temperatures above 20 °C. Hot and wet. Problematic on newly seeded turf in hot, wet conditions (damping-off).	Daytime temperatures below 13-16 °C. Cool and wet.	Low plant growth potential in hot or cold conditions and wet soils. Worst on stressed turfgrass.	Newly-established greens and/or stressed turfgrass. Soil temperatures of 10-25 °C (spring and fall) but damage can appear under summer stress conditions.
Cultural Conditions Favouring Disease	Excessive nitrogen fertility, poor soil drainage and air movement.	Excessive nitrogen fertility, poor soil drainage and air movement.	Poor soil drainage and air movement; plant stress.	Low fertility, soil compaction and plant stress.
Host Species	Primarily cool-season turf.	Primarily cool-season turf.	Cool- and warm-season turf.	Creeping bentgrass only.
Primary Location	Primarily cool-season turf.	Primarily cool-season turf.	Cool- and warm-season turf.	Creeping bentgrass only.
Using Signature Stressgard	120 - 200 g per 100 m ² at 14 - 21 day intervals in 6 - 10 L of water per 100 m ² .			Creeping bentgrass only.
Using Banol	64 mL per 100 m ² (preventive & curative) Use a 7 - 21 day interval with the shorter interval under high disease pressure. Apply in 8 - 20 L of water per 100 m ² , using 12 - 20 L water for higher cut turf. Water-in for root rot control, but leave on foliage for controlling blight.			120 g Signature Stressgard + 64 mL Banol per 100 m ² as part of a spring and fall rotation program. Apply in 8 L of water per 100 m ² and leave on the foliage. DO NOT WATER-IN.



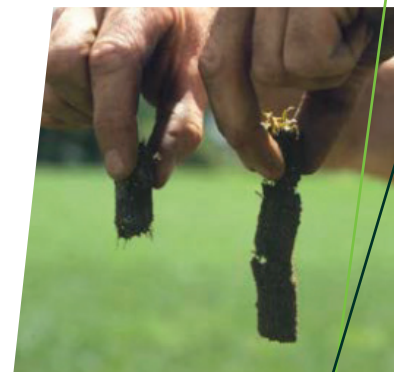
Left untreated, Pythium turf diseases can kill large areas of turf within a matter of days.
Photo: Dr. Bruce Martin, Clemson University.



Orange colour and irregular pattern of symptoms associated with Pythium blight on cool-season turf.
Photo: Derek Settle, Bayer.



Pythium oospores in roots (stained red with acid fuchsin).
Photo: Frank Wong, Bayer.



Pythium root rot reduces root mass in cool or hot, and wet conditions.
Photo: Lee Burpee, University of Georgia.



Science for a **better life**

www.bayeres.ca 1-888-283-6847

@BayerGolfCA

ALWAYS READ AND FOLLOW PRODUCT LABEL PRIOR TO USE.

Bayer, the Bayer Cross, Signature Stressgard, Stressgard Formulation Technology and Banol are trademarks of Bayer.